

Mental Health in Academia

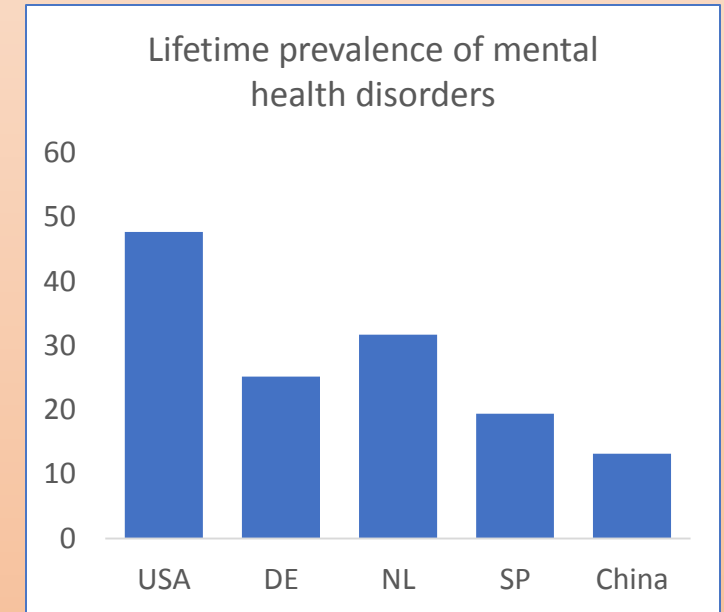
Problems, Solutions and Perspectives

Yorick Peterse

CNIC PhDay 2019

Facts about Mental Health Disorders

- $\pm 1/3$ people suffer from a mental health disorder at some point in their life
- Differences between countries:
 - Diagnosis only!
 - Only 8-14% seek treatment in developed countries
 - Taboo?
- High disease burden:
 - Early age of onset (adolescence or early adulthood)
 - Often chronic
 - 28.5% of years lived with disability caused by mental, neurological and substance abuse disorders
 - Depression leading cause of disability in high-income countries
- High costs: € 418 billion in Europe (2010: direct + indirect costs)

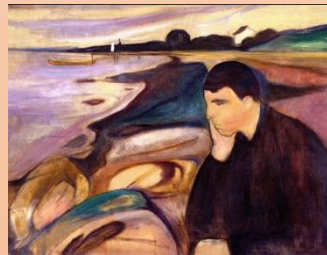


Types of Mental Health Disorders

- Anxiety disorders
 - Specific phobias
 - Social anxiety disorder
 - Panic disorder



- Mood disorders
 - Depression
 - Bipolar disorder



- Schizophrenia



- Impulse control disorders
 - ADHD
- Autism spectrum disorders



- Substance abuse disorders
 - Alcoholism
 - Drug abuse



- Eating disorders
- Etc.



Causes for Mental Health Issues

- Genetically determined risk:
 - Schizophrenia, bipolar disorder, autism: 60-80%
 - Depression: \pm 37%
 - Anxiety disorders: 30-67%

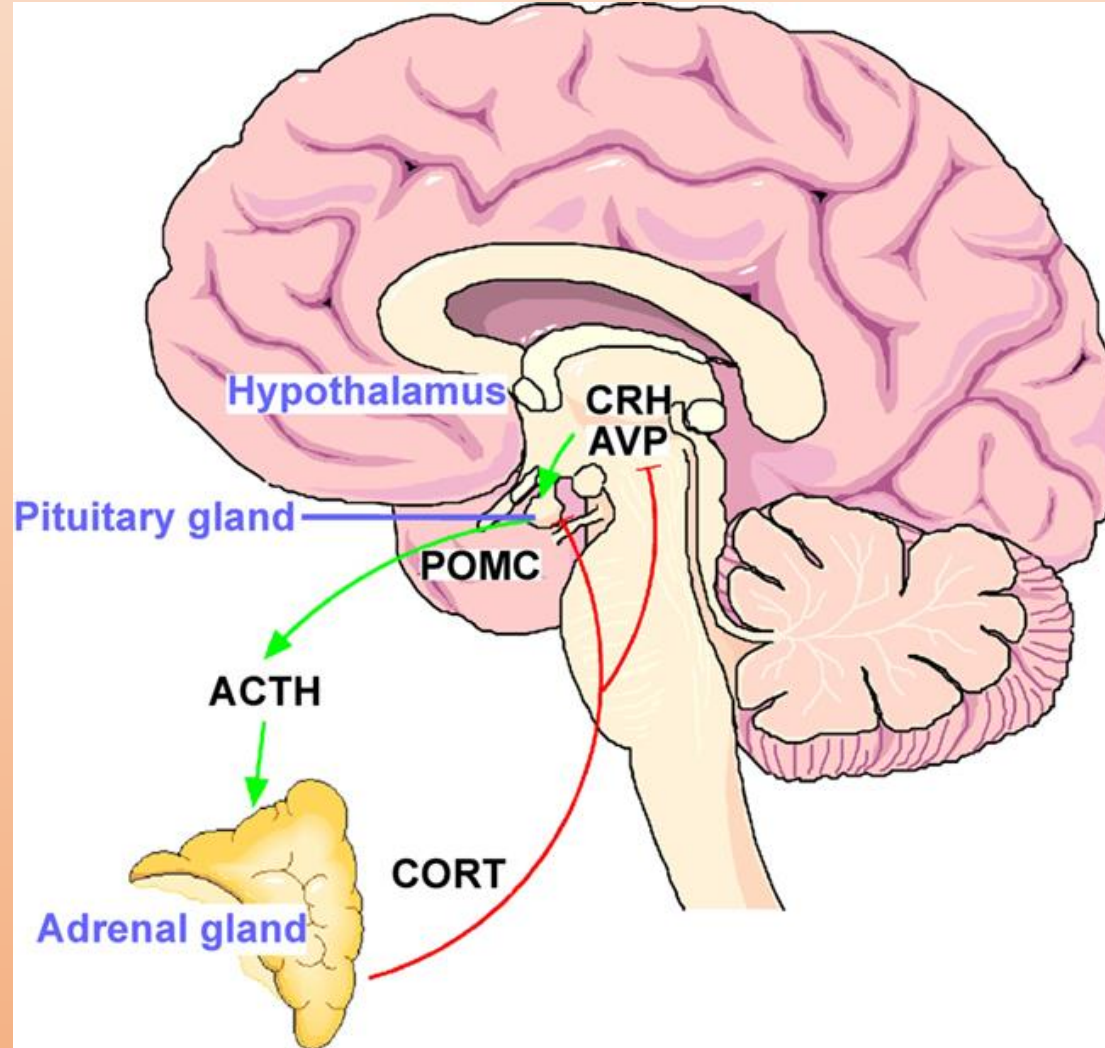


- Environmental factors:

- **Stressful life events**
- Prenatal stress
- Childhood trauma
- Parenting style
- Physical conditions
- Drug (ab)use
- Social-economic status
- Urbanicity
- **Social environment / support**



HPA-axis: the Link between Stress and the Brain



Examples of Stressors

- Physical health
 - Medical conditions
 - Diet
 - Sleep / rest
- Cognition
 - Intelligence
 - Memory and attention
 - Coping styles
- Personality
- Financial situation
- Housing situation
- Work-environment
 - Job control
 - Workload
 - Work-life balance
- Social environment
 - Social support (family + friends)
 - Relationship status / state
- Conflict

Mental Health in Academia

- Undergraduate students (US):

- 11% extreme stress levels
- 11% symptoms of depression
- 15% symptoms of anxiety

The prevalence and correlates of depression, anxiety, and stress in a sample of college students

R. Beiter, R. Nash, M. McCrady, D. Rhoades, M. Linscomb, M. Clarahan, S. Sammut*

- US graduate students (90% PhDs):

- 41% moderate to severe anxiety
- 39% depression
- 6% in general population

Evidence for a mental health crisis in graduate education

Teresa M Evans¹, Lindsay Bira², Jazmin Beltran Gastelum³, L Todd Weiss⁴ & Nathan L Vanderford^{4,5}

- PhD candidates:

- 25% concerned about mental health
- 12% sought assistance

A love–hurt relationship

Nature's 2017 PhD survey reveals that, despite many problems with doctoral programmes, PhD students are as committed as ever to pursuing research careers.

- Academic staff (UK):

- 37% prevalence of mental health disorders

Understanding mental health
in the research environment

A Rapid Evidence Assessment



Methodology: GHQ

- General Health Questionnaire
 - 28 or 12-items
 - More than 4 symptoms indicates elevated risk for mental health problems (GHQ4+)
 - Not a diagnostic tool

Tension, feeling under constant pressure

Unhappy or depressed

Lack of sleep

Unable to overcome difficulties

Concentration problems

Not enjoying normal day-to-day activities

Lack of self-confidence

Not feeling happy

Sense of not playing a useful role

Difficulty in making important decisions

Not able to face problems

Feeling of worthlessness

Mental Health among PhD Candidates

Work organization and mental health problems in PhD students

Katia Levecque^{a,b,*}, Frederik Anseel^{a,b,c}, Alain De Beuckelaer^{d,e,a},
Johan Van der Heyden^{f,g}, Lydia Gisle^f

- Belgian PhD candidates:
 - 51% experiences psychological distress
 - 32% so many symptoms that they were at extreme risk
 - Comparison with (1) higher education students, (2) highly educated individuals, (3) highly educated employees
 - Respectively 1.85, 2.43 and 2.84 higher risk for developing MH problems
- Confirmatory study in Leiden (NL):
 - 38.3% showed more than 4 symptoms

THE MENTAL WELL-BEING OF
LEIDEN UNIVERSITY PhD
CANDIDATES



CWTS POLICY REPORT
Meaningful metrics

Mental Health Problems among German PhD Candidates

- German research landscape:
 - Universities (16 states)
 - Scientific societies (Max Planck Society, Fraunhofer, Leibniz, Helmholtz)
- N2 network = PhD networks of scientific societies
 - Surveys at Max Planck PhDnet and Helmholtz Juniors in 2017
 - Joint survey in 2018
 - Max Planck: 53% stressed about PhD, 16% very stressed (>3 symptoms)
 - Helmholtz: >60% not able to focus on PhD, 40% not able to cope with tasks, 20% not able to handle workload



Factors affecting Mental Health in Academia

- Work-life and life-work balance
- Financial situation and funding opportunities
- Job demands
- Job control
- (Perception of) career perspectives
- Influence on decision making
- Relationship to supervisor
- Belonging to a minority group (gender, nationality etc.)
- Social support

Suggestions for Improvement

- Personal level
- **Institutional level**
 - Supervision and leadership
 - Financial security and job security
 - Work demands and work-life balance
 - Career development
 - Administrative and material support
 - Social environment
- Systemic level

Personal Improvement

- Identify stressors
- Sleep, food, physical activity, social environment etc.
- Recognize thoughts and behaviours

Getting help

- Talk to social environment
- Talk to counsellor
- Online self-help
- General practitioner / specialist

Supervision and Leadership

- Often frustration no. 1
- Ideally:
 - Involved supervisor
 - Concrete and realistic (time) plan
 - Plan B in case experiments go wrong
- Measures:
 - Mandatory PhD plan + timeline
 - Mandatory regular status meetings
 - Independent Thesis Advisory Committee
 - Limit the number of PhDs per supervisor
 - Leadership training for supervisors
 - Monitoring performance of supervisors



Power Abuse in Academia

Top geneticist loses £3.5-million grant in first test of landmark bullying policy

The Wellcome Trust pulled the grant from Nazneen Rahman, who worked at the Institute of Cancer Research in London.

She's the world's top empathy researcher. But colleagues say she bullied and intimidated them

By [Kai Kupferschmidt](#) | Aug. 8, 2018 , 4:10 PM

Solutions:

- Training
- Arbitration procedures (resolution, new supervision selection, data use, publication)
- Code of conduct
- Consequences

Financial Security and Funding Opportunities

- Contract not stipend (social security)
- Fair payment
- Contract duration
- Ability to plan life events



- Measure:
 - Aligning interests
 - Tying PhD to pre-determined goals (e.g. number of publications)
 - Coupling with financial incentive for academic institution (e.g. 50 000 euros in the Netherlands)

Work Demands and Work-Life Balance

- Academics usually really like their job (68% satisfaction in Nature Survey)
- Positive correlation time spent on research and positive emotions
- Work >40 hours
- (unconscious) impact on life
- Solutions:
 - Work-life balance training
 - Encouragement to take available holidays
 - Remote work and part-time work
 - Work-family support structures:
 - Day care at institute
 - Financial support for families
 - Job opportunities / networks for partners

Career Development

Are PhDs just cheap labour for universities?

PhD grads complain that there are too few academic jobs. Should universities support their postgrads into alternative careers?

- 13% of PhD candidates manage to continue to work in academia
- 75% of PhD candidates wants to continue in academia, but also interested in alternative career paths
- Uncertainty about career perspectives cause for stress
- Cultural change
- Academic career not 'ideal standard'
- Transferrable skills
- Career counselling
- Career days

CAREER COLUMN · 28 AUGUST 2019

Make science PhDs more than just a training path for academia

Administrative and Material Support

- Sufficient resources to conduct research
- Aforementioned administrative changes
- Institutional health/psychological check-ups
- Psychological support & counselling
- Training in recognizing symptoms in own and other's behaviour
- Online self-help guide
- Online guide on how to find assistance, including foreign language!
- Protection of minority groups

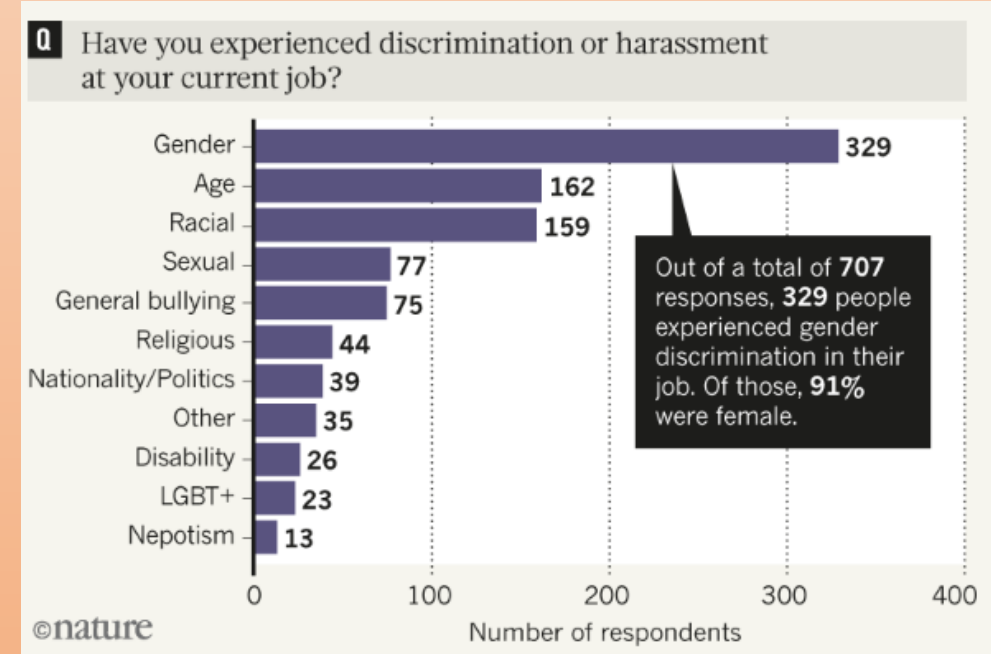
**University counselling services
'inundated by stressed academics'**

By Hannah Richardson
BBC News education and social affairs reporter



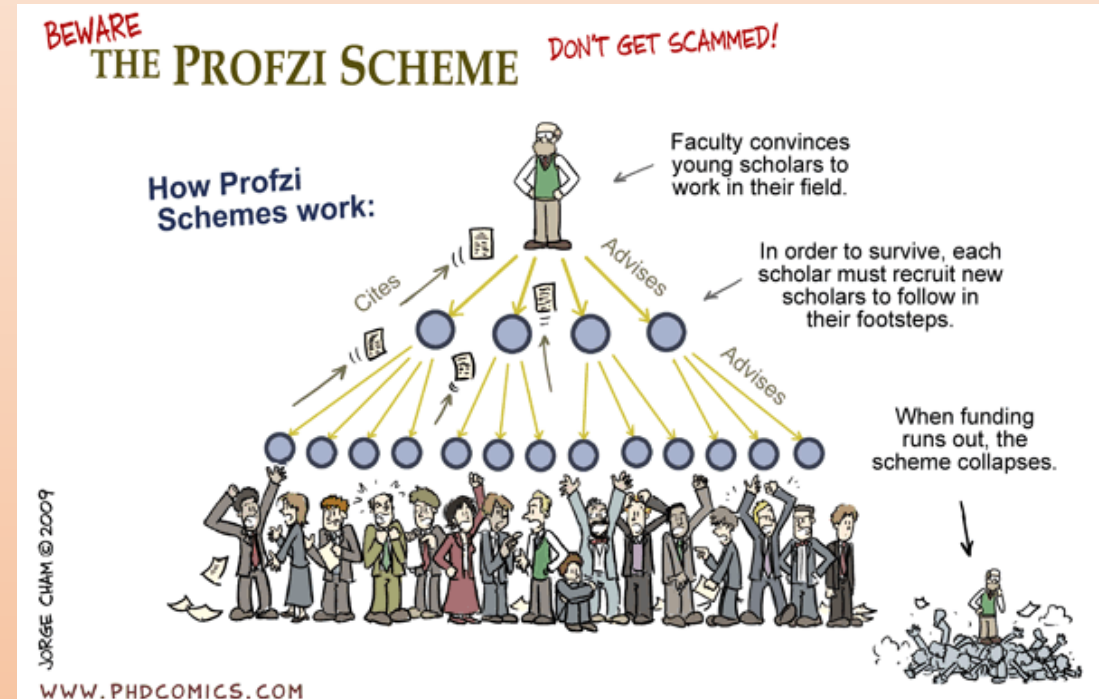
Social Support and Communication

- PhD representative body
 - Peer groups / social events
 - Social support for foreign nationals
 - Taboo
 - Stigma
-
- Awareness initiatives
 - Mental health
 - Normalization of symptoms of maladaptive behaviour
 - Ethnic diversity
 - Disability
 - Gender
 - LGBTQIA+



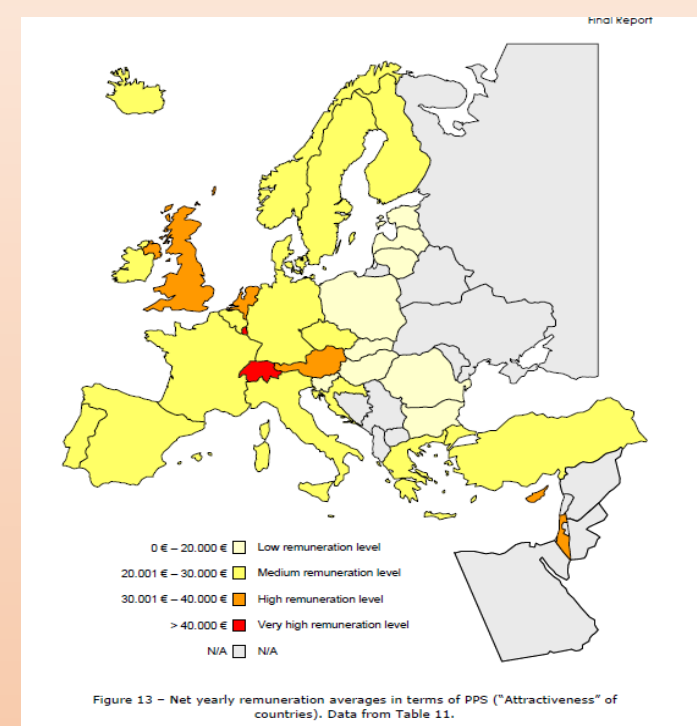
Systemic Changes

- The academic pyramid
- Measures of success
- Publication policies
 - Replication
 - Null findings
- Power balance and PI selection
 - Separation of scientific leadership and management
 - Independent supervision
 - Leadership skills
 - Reverse reference system
- Career diversity
- Criminalization of scientific fraud

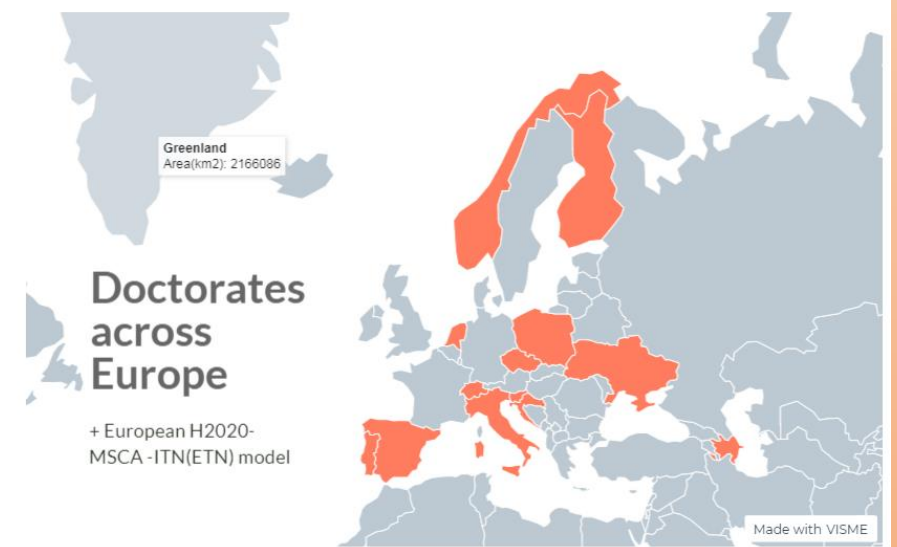


International Perspectives

- PhD students vs doctoral researcher
- Salary levels
- Requirements for performing and obtaining a PhD
- Eurodoc survey
 - General info & admission
 - Progression
 - Graduation
- Mental Health attention (partially cultural)
 - UK best-case example



EURODOC survey on the structure of the doctorates across europe



Future Perspectives

- Standardizing institutional changes
- Standardized international / European surveys
- More focus on senior researchers (postdocs and PI's)
- More institutional, regional, national and international networking



Thanks for your attention

If you have any questions feel free to contact

Yorick Peterse (ypeterse@hotmail.com)